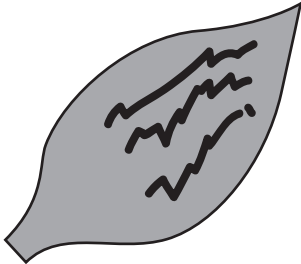
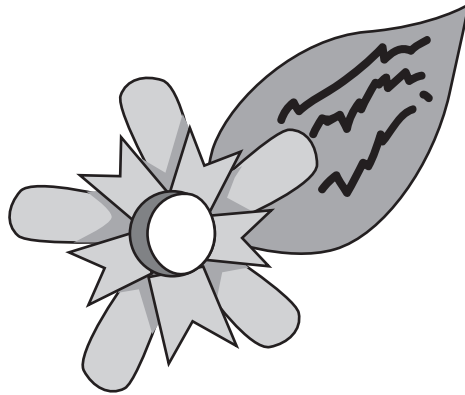


Assembly of Toilet Paper Tube Tapestry

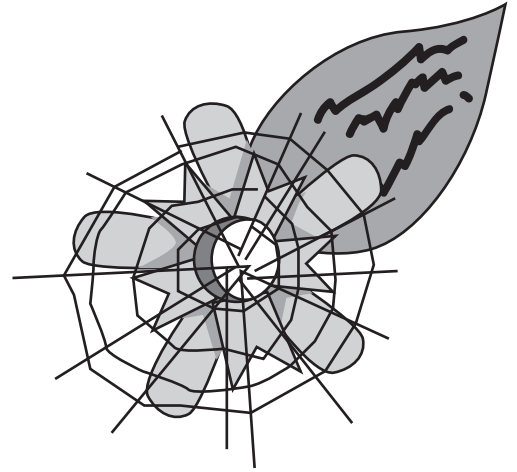
1. Have the students personalize their flowers by writing on the paper leaf* a sentence about what they repurpose and how they repurpose it.



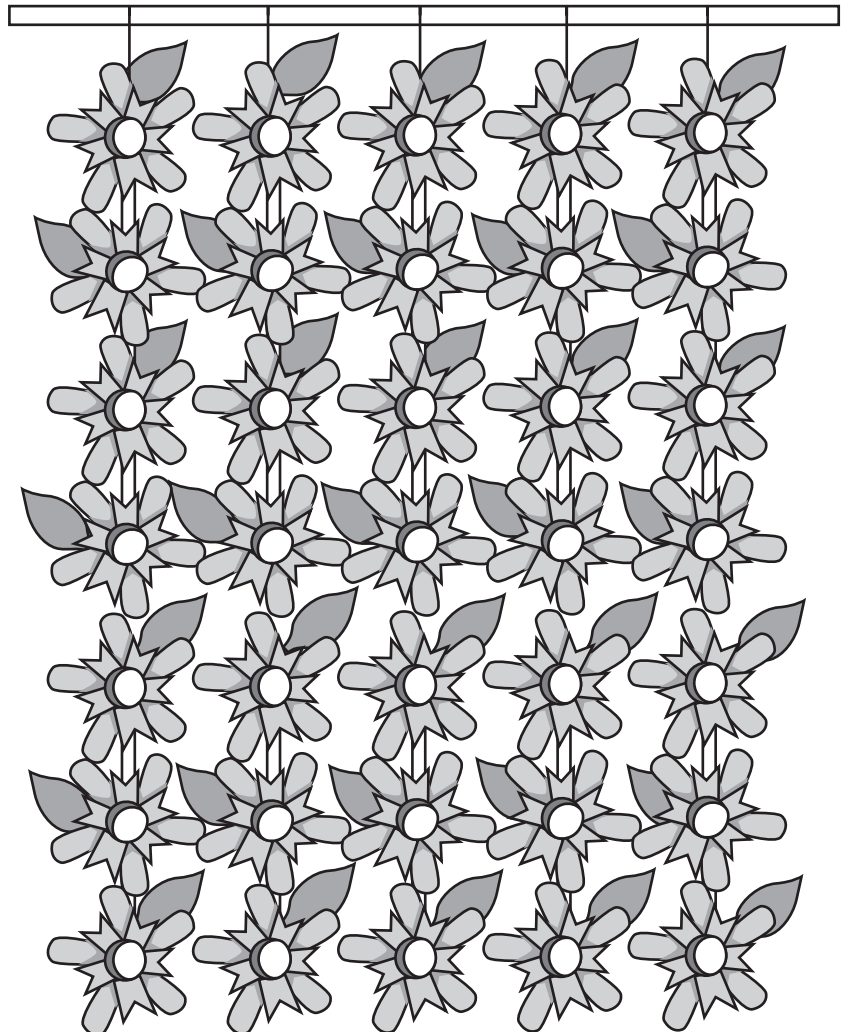
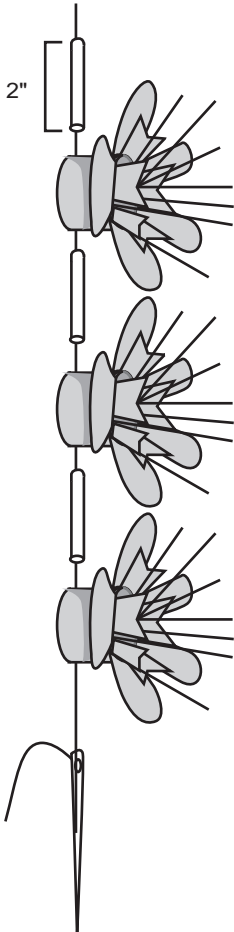
2. Staple leaf to back side of flower tube.



3. Place produce netting in the middle of the flower. Staple at back side of tube in one spot.



4. Precut straws to 2" lengths. Alternate stringing flowers and straws.



* Paper leaf template is provided on another sheet.